

205



German Technology

»» Features

- DPDT ; TPDT General Purpose Power Relay.
- DC / AC Coil.
- Single or Twin contacts with / without gold plated.
- With position indicator, manual override and override level.
- Optional LED and protection diode.
- Comply with RoHS-Directive 2002/95/EC.

»» Type List

Terminal style	Contact form	Designation (provided with)	Enclosure style	
			Dust cover with manual	Dust cover with lockable manual
8PIN or 11PIN quick terminal	2C (DPDT)	LED	205-2CC-D-1	205-2CC-DM-1
		Diode & LED	205-2CC-D-3	205-2CC-DM-3
	3C (TPDT)	LED	205-3CC-D-1	205-3CC-DM-1
		Diode & LED	205-3CC-D-3	205-3CC-DM-3
	2T (DPDT)	LED	205-2TC-D-1	205-2TC-DM-1
		Diode & LED	205-2TC-D-3	205-2TC-DM-3
	3T (TPDT)	LED	205-3TC-D-1	205-3TC-DM-1
		Diode & LED	205-3TC-D-3	205-3TC-DM-3
General quick terminal	2C (DPDT)	LED	205W-2CC-D-1	205W-2CC-DM-1
		Diode & LED	205W-2CC-D-3	205W-2CC-DM-3
	3C (TPDT)	LED	205W-3CC-D-1	205W-3CC-DM-1
		Diode & LED	205W-3CC-D-3	205W-3CC-DM-3
	2T (DPDT)	LED	205W-2TC-D-1	205W-2TC-DM-1
		Diode & LED	205W-2TC-D-3	205W-2TC-DM-3
	3T (TPDT)	LED	205W-3TC-D-1	205W-3TC-DM-1
		Diode & LED	205W-3TC-D-3	205W-3TC-DM-3

»» Ordering Information

205 W - 3C CA - DM - 1
 1 2 3 4 5 6

- | | |
|--|--|
| 1. 205 -- Basic series designation | 4. C -- Contant material AgNi |
| | CA -- Contant material AgNi + Au plating |
| 2. Blank -- 8PIN or 11PIN quick terminal | |
| W -- General quick terminal | 5. D -- Dust cover with manual |
| | DM -- Dust cover with lockable manual |
| 3. 2C -- Double pole double throw | |
| 3C -- Three pole double throw | 6. Blank -- Without special features |
| 2T -- Twin contact, double pole double throw | 1 -- Coil parallel with LED |
| 3T -- Twin contact, three pole double throw | 2 -- Coil parallel with diode |
| | 3 -- Coil parallel with diode & LED |



»» Contact Rating

Type	Single contact	Twin contact
Rated load (resistive)	10A 250VAC	4A 250VAC
Inrush current	20A	10A
Max. switching capacity	4000VA	1000VA

»» Coil Rating (DC)

Rated voltage (V)	Rated current $\pm 10\%$ at 23°C (mA)	Coil resistance $\pm 10\%$ at 23°C (Ω)	Max. continuous voltage at 60°C	Pick up voltage(Max) at 23°C	Drop out voltage(Min) at 23°C	Power consumption at rated voltage
12	125	96	120 % of rated voltage	80% of rated voltage	5% of rated voltage	approx. 1.2W
24	63	384				
48	31	1,536				
60	25	2,400				
110	14	7,660				
125	12	10,360				
220	7.2	30,630				

»» Coil Rating (AC)

Rated voltage (V)	Coil resistance $\pm 10\%$ at 23°C (Ω)	Max. continuous voltage at 40°C	Pick up voltage(Max) at 23°C	Drop out voltage(Min) at 23°C	Power consumption at rated voltage
24	74	110% of rated voltage	85% of rated voltage	15% of rated voltage	approx. 2.0VA
48	303				
60	474				
110	1,710				
115	1,710				
230	7,500				

»» Specification

Contact material	AgNi alloy
Contact resistance ⁽¹⁾	100 m Ω Max.
Operate time ⁽¹⁾	12 ms Max.
Release time ⁽¹⁾	10 ms Max.
Insulation resistance ⁽¹⁾	1,000 M Ω Min. (DC 500V)
Dielectric strength ⁽¹⁾	Between open contact : AC 1500V , 50/60Hz 1 min.
	Between contact and coil : AC 2500V , 50/60Hz 1 min.
	Between contact circuits : AC 2500V , 50/60Hz 1 min.

Vibration resistance	Operating extremes	30 ~ 100Hz , >4G
Life expectancy	Mechanical	20,000,000 operations (frequency 18,000 operations/hr)
Operating ambient temperature	DC	-25 ~ +60°C (no freezing)
	AC	-25 ~ +40°C (no freezing)
Weight	Approx.90g	

Note : (1) initial value

»» Safety Approval

Certified	UL	CSA / CUS
File No.	E41922	171397

»» Safety Approval Rating

◆ UL

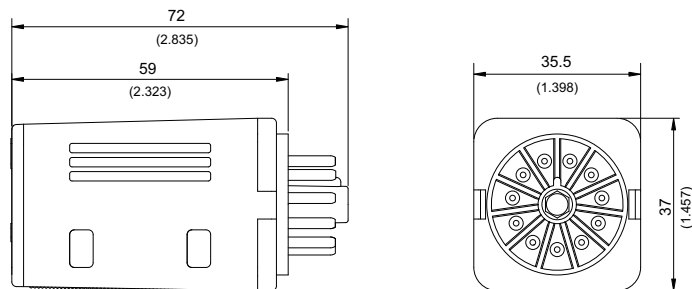
2C	3C	2T / 3T
10A 240VAC	6.6A 240VAC	4A 240VAC
6A 24VDC	10A 120VAC	6A 24VDC
0.3A 240VDC	6A 24VDC	0.3A 240VDC
0.6A 120VDC	0.3A 240VDC	0.6A 120VDC
	0.6A 120VDC	

◆ CSA / CUS

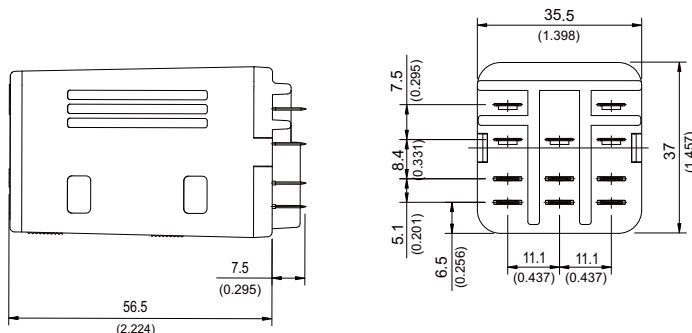
2C	3C	2T / 3T
10A 240VAC	6.6A 240VAC	4A 240VAC
6A 24VDC	10A 120VAC	6A 24VDC
0.3A 240VDC	6A 24VDC	0.3A 240VDC
0.6A 120VDC	0.3A 240VDC	0.6A 120VDC
1/2HP 120VAC / 240VAC	0.6A 120VDC	1/2HP 120VAC / 240VAC
	1/2HP 120VAC / 240VAC	

»» Outline Dimensions

◆ 205



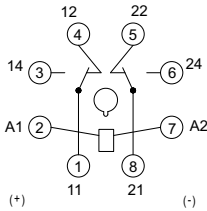
◆ 205W



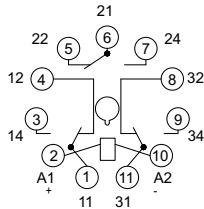
Wiring Diagram BOTTOM VIEW

◆205

DPDT

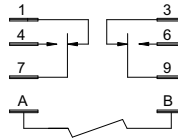


TPDT

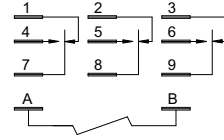


◆205W

DPDT



TPDT



Engineering Data

