

# CSR-P50



## Main Feature:

1. Socket with PCB terminal.
2. No reduction of protection class or creepage/clearance with plastic retainer.
3. Easy replacement of relays.
4. Socket can be used as connector for diagnosis function.
5. Sockets and accessories: RoHS compliance (Directive 2002/95/EC).

Socket with PCB-type terminals

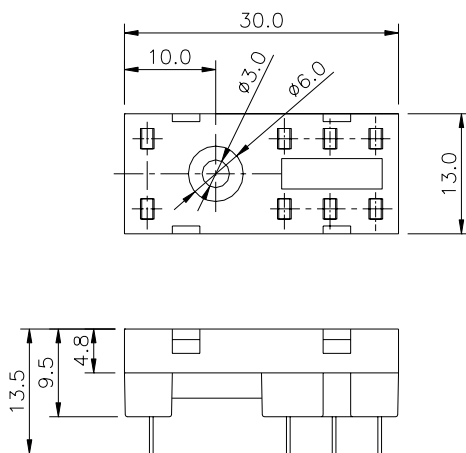
Approvals:



## Technical data:

Rated current	12A
Rated voltage / max. Switching voltage AC	150/300 VAC
Dielectric strength coil-contact circuit	2,500 V <sub>rms</sub>
Clearance / creepage coil-contact circuit	≥ 4/4mm
Material group of insulation parts	≥ IIIa
Insulation to IEC 60664-1	
Type of insulation coil-contact circuit	reinforced
Open contact circuit	functional
Rated insulation voltage	250V
Pollution degree	2
Rated voltage system	230/400V
Over voltage category	III
RoHS Directive 2002/95/EC	
Sockets, retainers and marking tag:	compliant
Degree of protection DIN 40050	IP20
Ambient temperature range	-25...+70°C
Terminals	PCB
Insertion cycles	A (10)
Max. Insertion Force total	100N
Mounting distance	0, dense packing
Weight	3g
Packaging unit	100pcs.

## Dimension:



## Equipment:



Metal)



Plastic